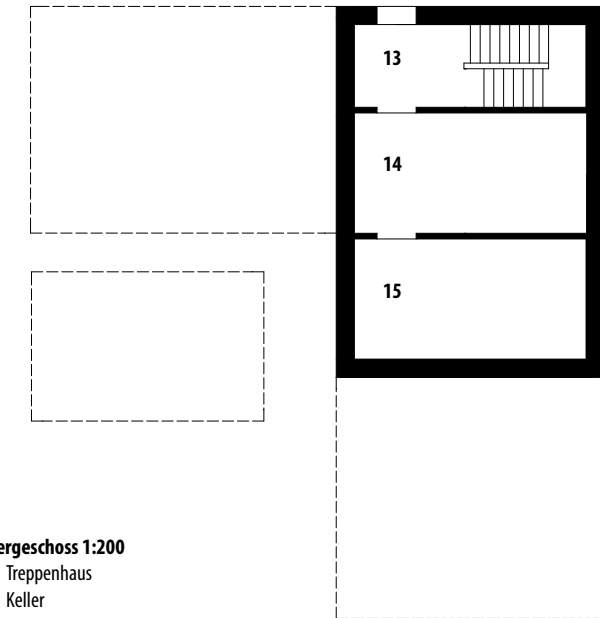


EFH Ackermann, Alpstrasse, Widnau

Baujahr: 2008

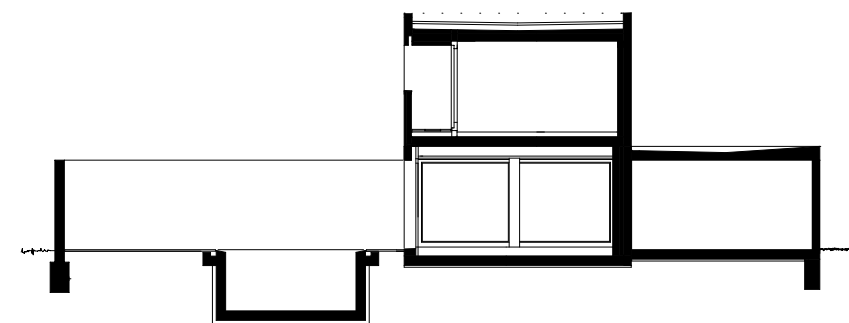


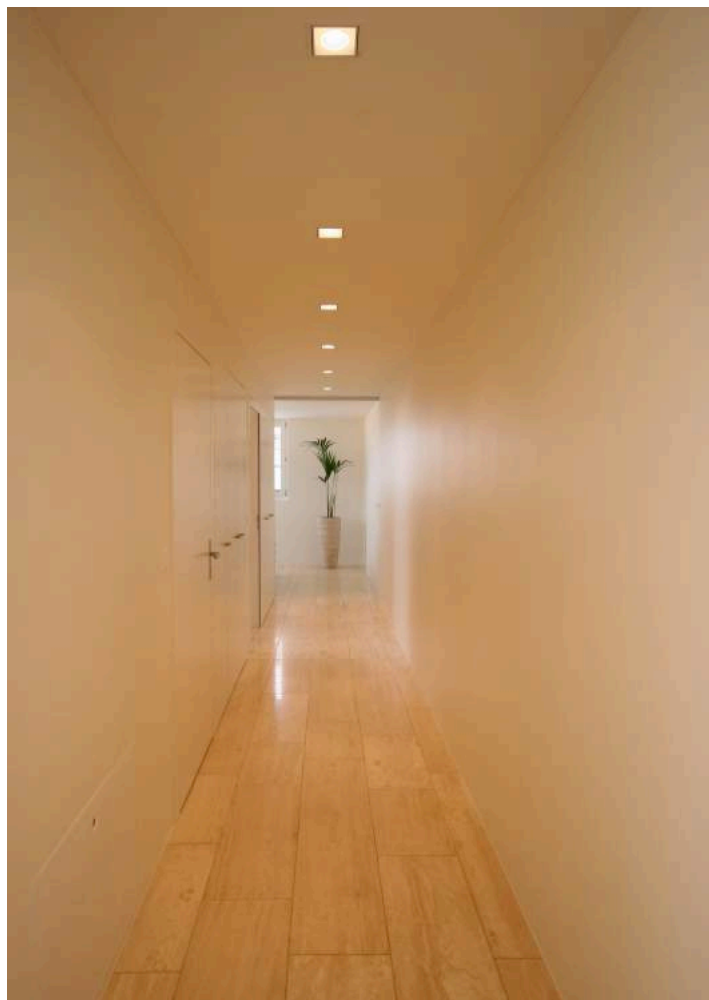


Untergeschoss 1:200

- 13 Treppenhaus
- 14 Keller
- 15 Technik

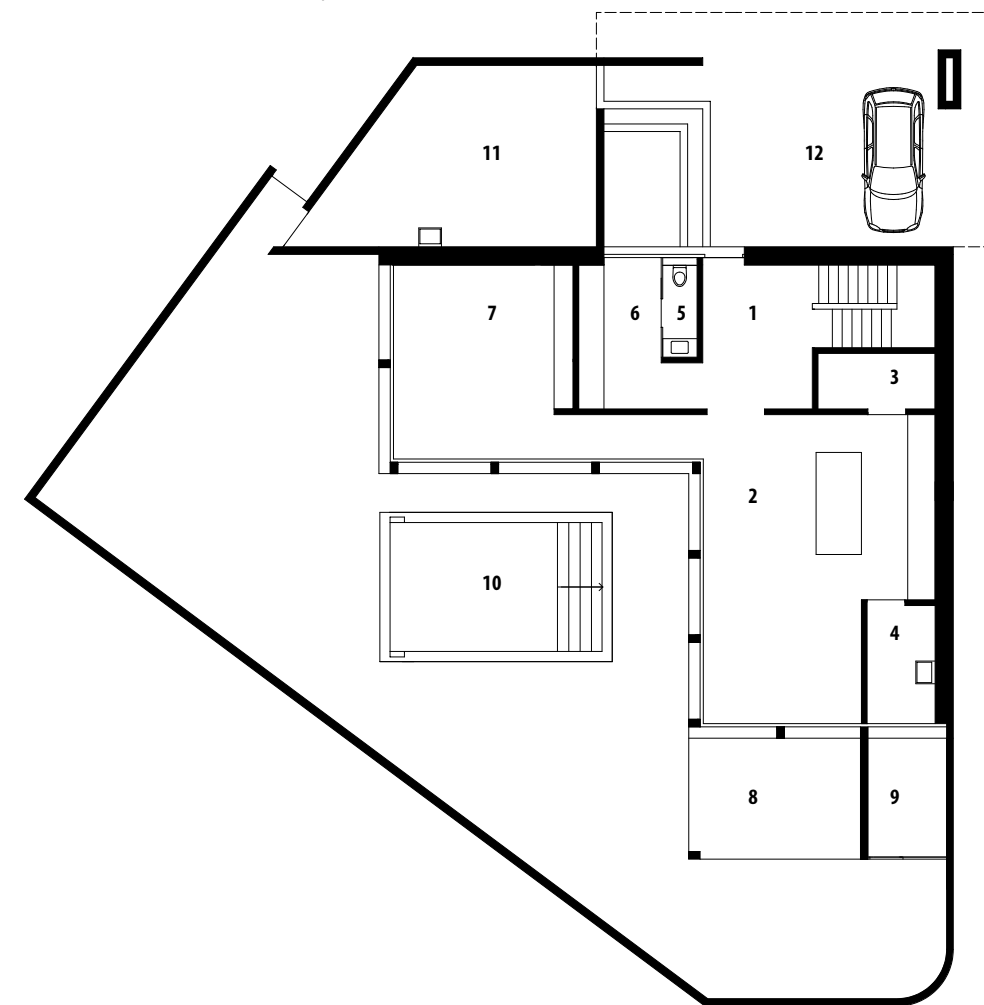
Querschnitt 1:200



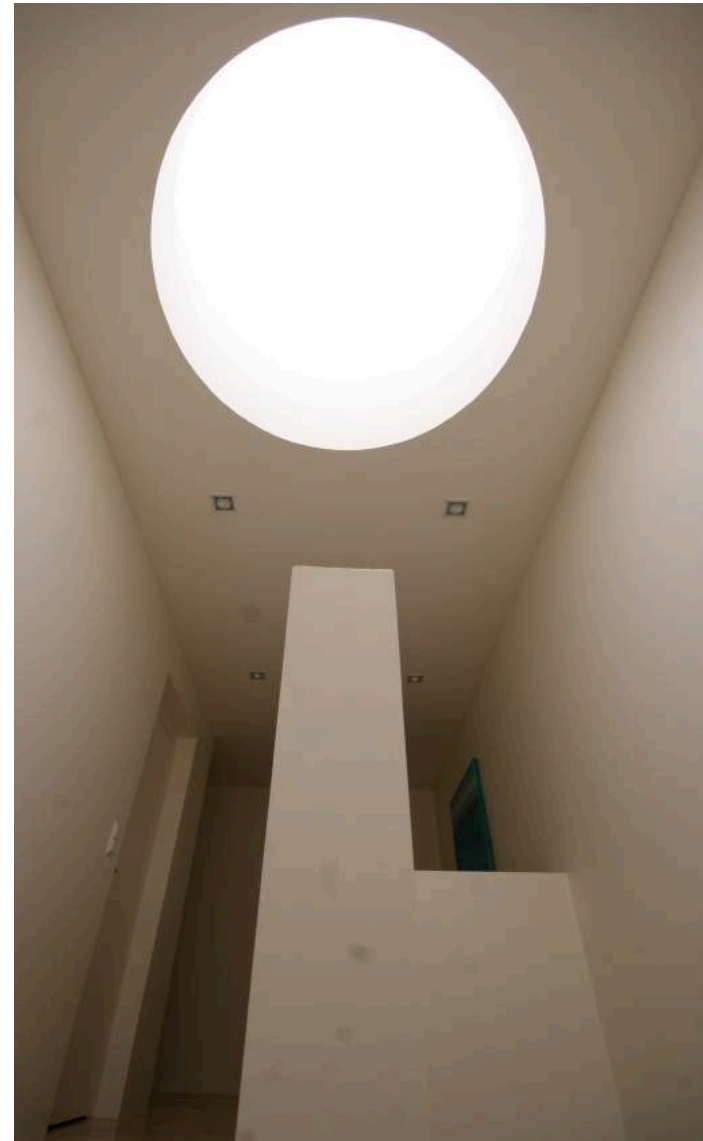
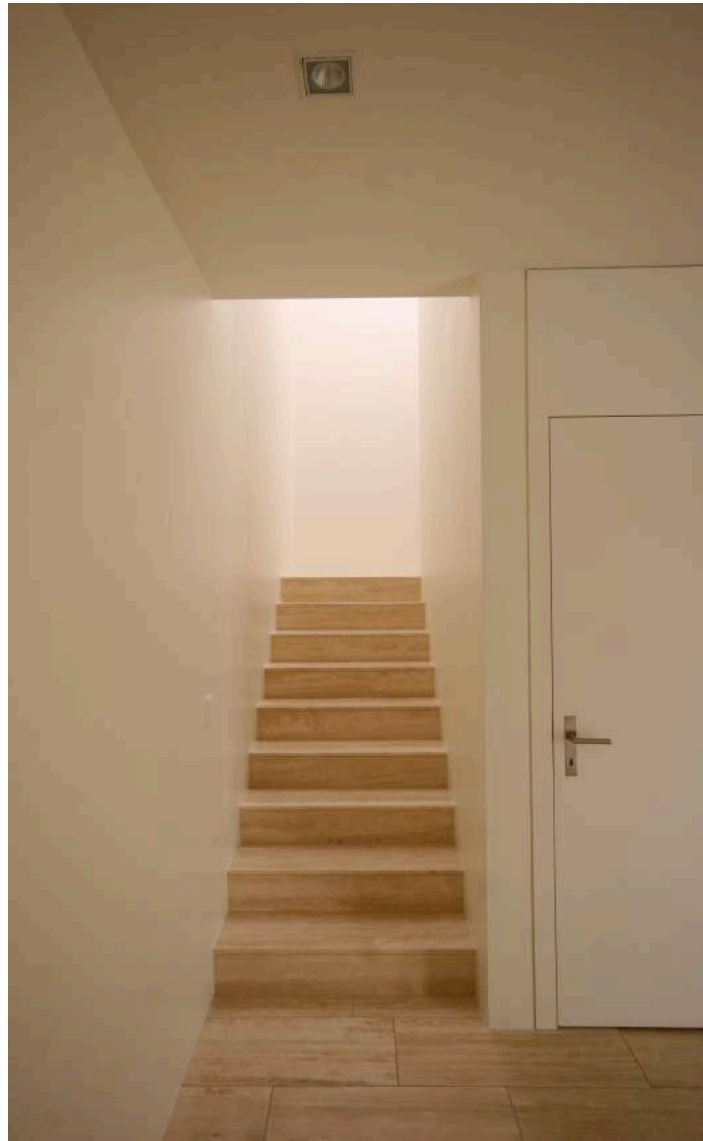


Wohngeschoss 1:200

- | | |
|------------------|---------------------|
| 1 Eingang | 7 Wohnen |
| 2 Tagesraum | 8 ged.Terrasse |
| 3 Speis | 9 Aussenabstellraum |
| 4 Hauswirtschaft | 10 Innen Hof / Pool |
| 5 Gäste WC | 11 Velo Abstellraum |
| 6 Garderobe | 12 Carport |







Schlafgeschoss 1:200

- | | |
|-----------------|-----------------|
| 16 Treppenhaus | 20 Bad / Kinder |
| 17 Ankleide | 21 Gang |
| 18 Eltern | 22 Zimmer 1 |
| 19 Bad / Eltern | 23 Zimmer 2 |
| | 24 Atelier |

