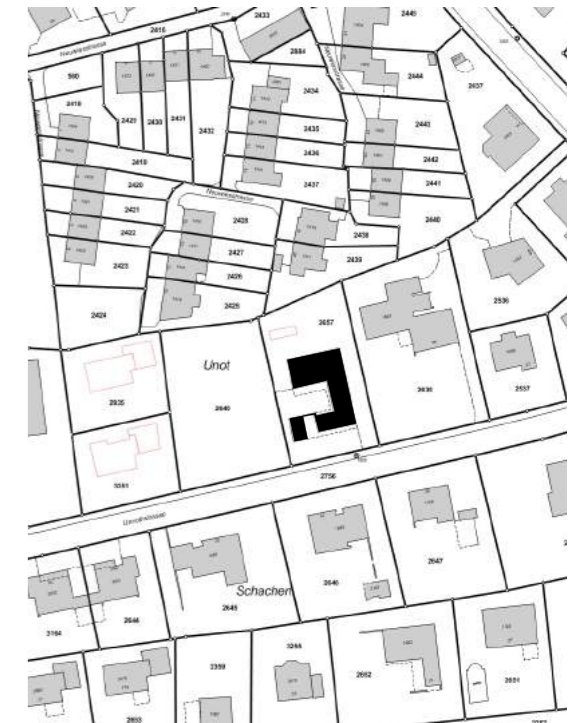


**EFH Nagel, Unnothstrasse, St. Margrethen**

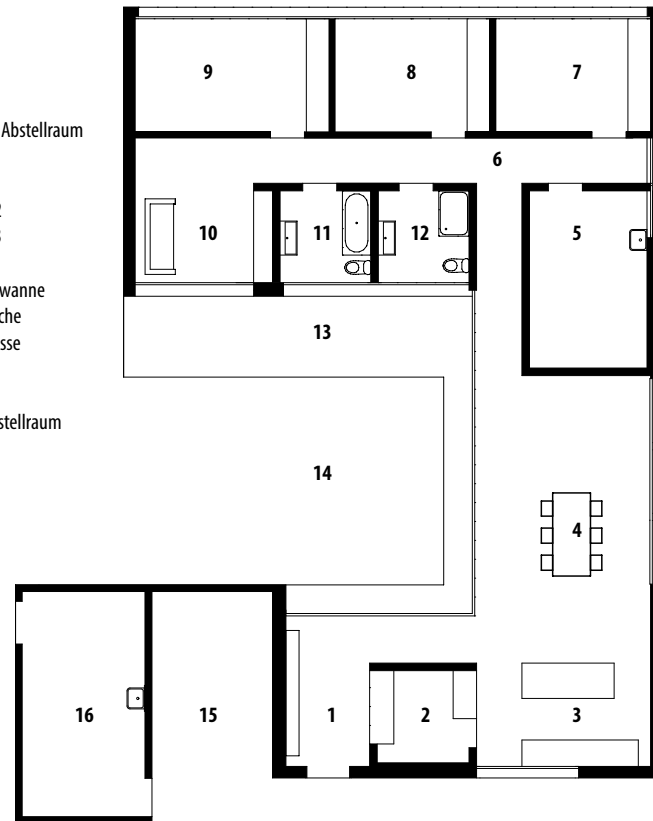
Baujahr: 2004





Wohngeschoss 1:200

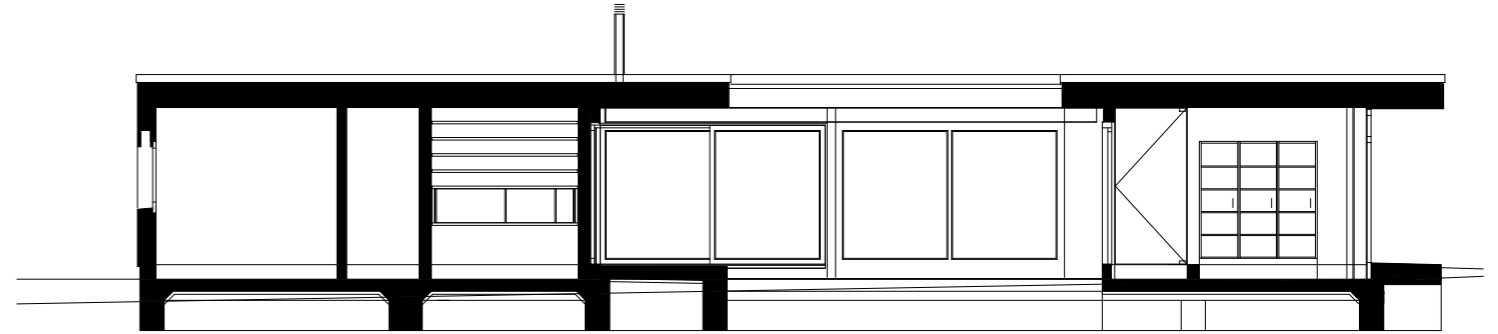
- 1 Eingang
- 2 Speis
- 3 Küche
- 4 Essen
- 5 Technik / Abstellraum
- 6 Gang
- 7 Zimmer 1
- 8 Zimmer 2
- 9 Zimmer 3
- 10 Wohnen
- 11 WC / Badwanne
- 12 WC / Dusche
- 13 ged.Terrasse
- 14 Hof
- 15 Carport
- 16 Velo / Abstellraum











Querschnitt 1:125



